

Serie PK: Polyurethaan met Kunststof Kern

TECHNISCHE SPECIFICATIE

- Loopvlak: gespoten polyurethaan
- Kern: hoogwaardig polyamide 6
- Temperatuurbereik: -30°C tot +80°C

EIGENSCHAPPEN

Het relatief harde gespoten polyurethaan loopvlak zorgt voor uitstekende roleigenschappen op gladde vloeren terwijl toch het geluid enigszins gedempt wordt. Slijtvast, streepvrij en een mechanische hechting op de kern.

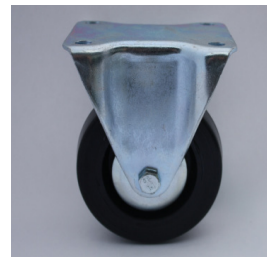
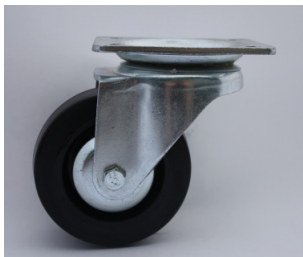
TOEPASSING

- Licht tot middelzwaar transport op gladde vloeren alternatief voor nylon wiel zonder loopvlak (Serie P)


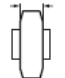

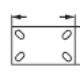
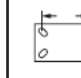
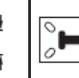
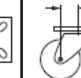
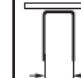






A) Serie PK + K

I. Plaatbevestiging



• Rollager

										zwenk vork	zwenk vork + rem	vaste vork
100	35	128	105x86	80x60	9	40	52	120		KR3.100ZWPR	+R	KVW.100ZWPR
125	35	155	105x86	80x60	9	43	52	140		KR3.125ZWPR	+R	KVW.125ZWPR